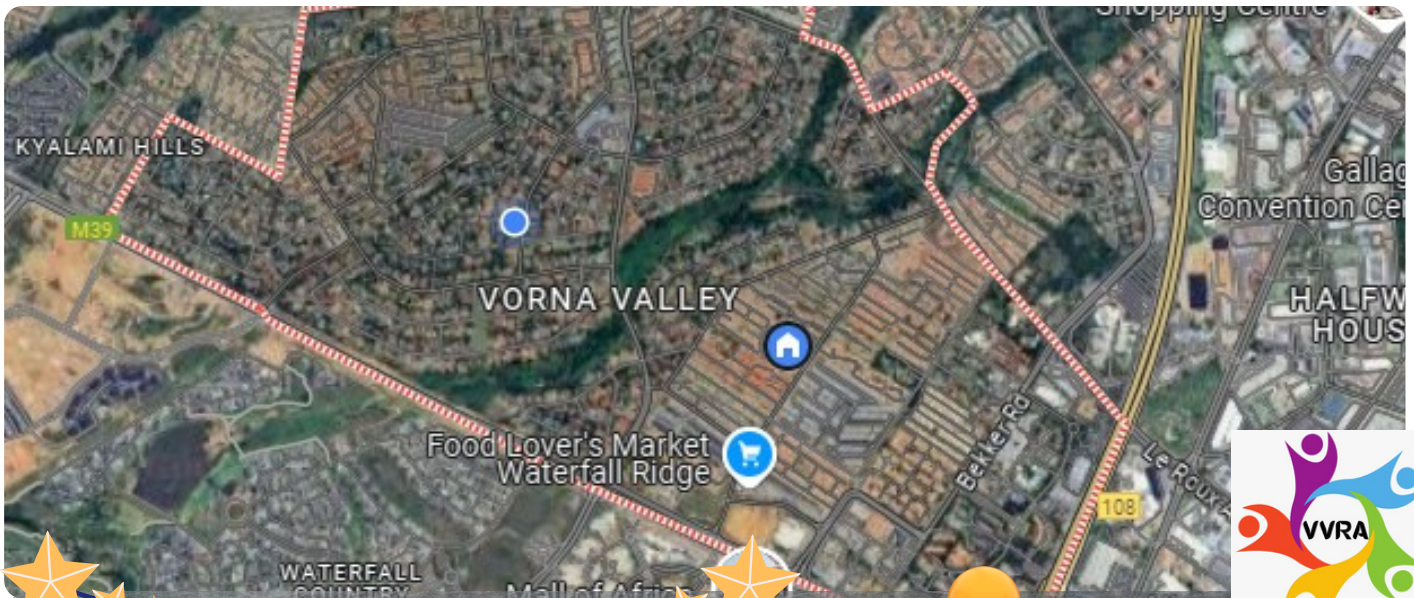


VORNA VALLEY COMMUNITY

NEWSLETTER



**HAPPY
NEW YEAR**



Welcome to our 1st edition
for 2025!

The VVRA Committee
thanks you for your valued
input & support, in creating
a community we can all be proud
to call HOME!



- In This Issue...**
- ✓ Logging Outages
 - ✓ Sewerage Dos and Don'ts
 - ✓ Security Camera Map
 - ✓ Local Business Adverts!

This newsletter is proudly sponsored by
Mid Properties



Left in the Dark, Literally!

When the power outage strikes and your only resource seems helpless, what does it mean when they cancel or close your ticket prematurely?

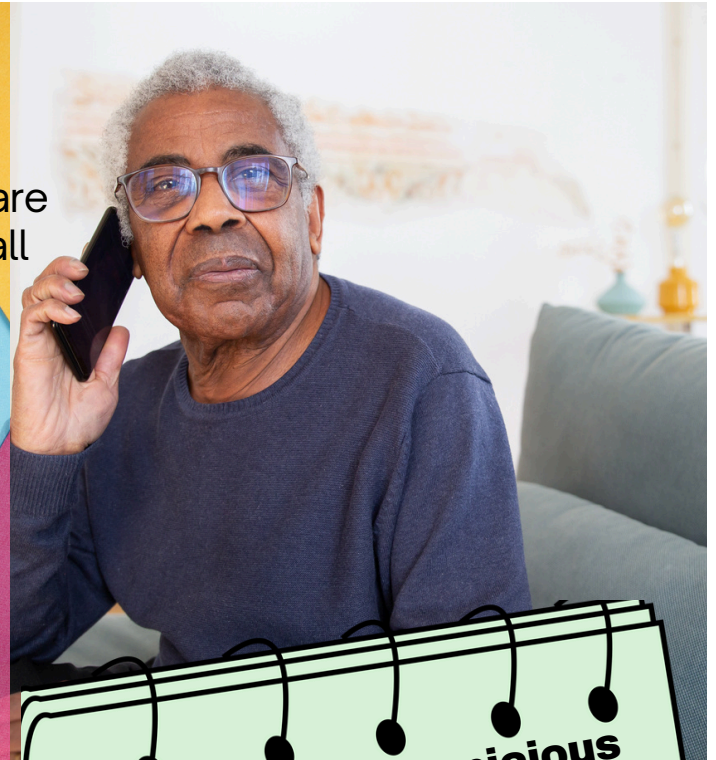
There are 2 reasons why your tickets raised with City Power get closed or cancelled, while you're still power-less.

1 Reporting the Same Fault

Your ticket is cancelled when many customers on the same street who are affected by the same outage, have all logged the same fault.

2 Clogging of the System

When there is an area outage affecting more customers and supply has been restored, all calls that are related to those particular areas are grouped and closed.



Report Suspicious Behaviour Immediately!

Be on the look out and immediately report any suspicious behavior around sub-stations and transformers in the neighbourhood, to your security company.

These areas are vital to our community's power supply and are often targeted for theft or vandalism.


THANK YOU!

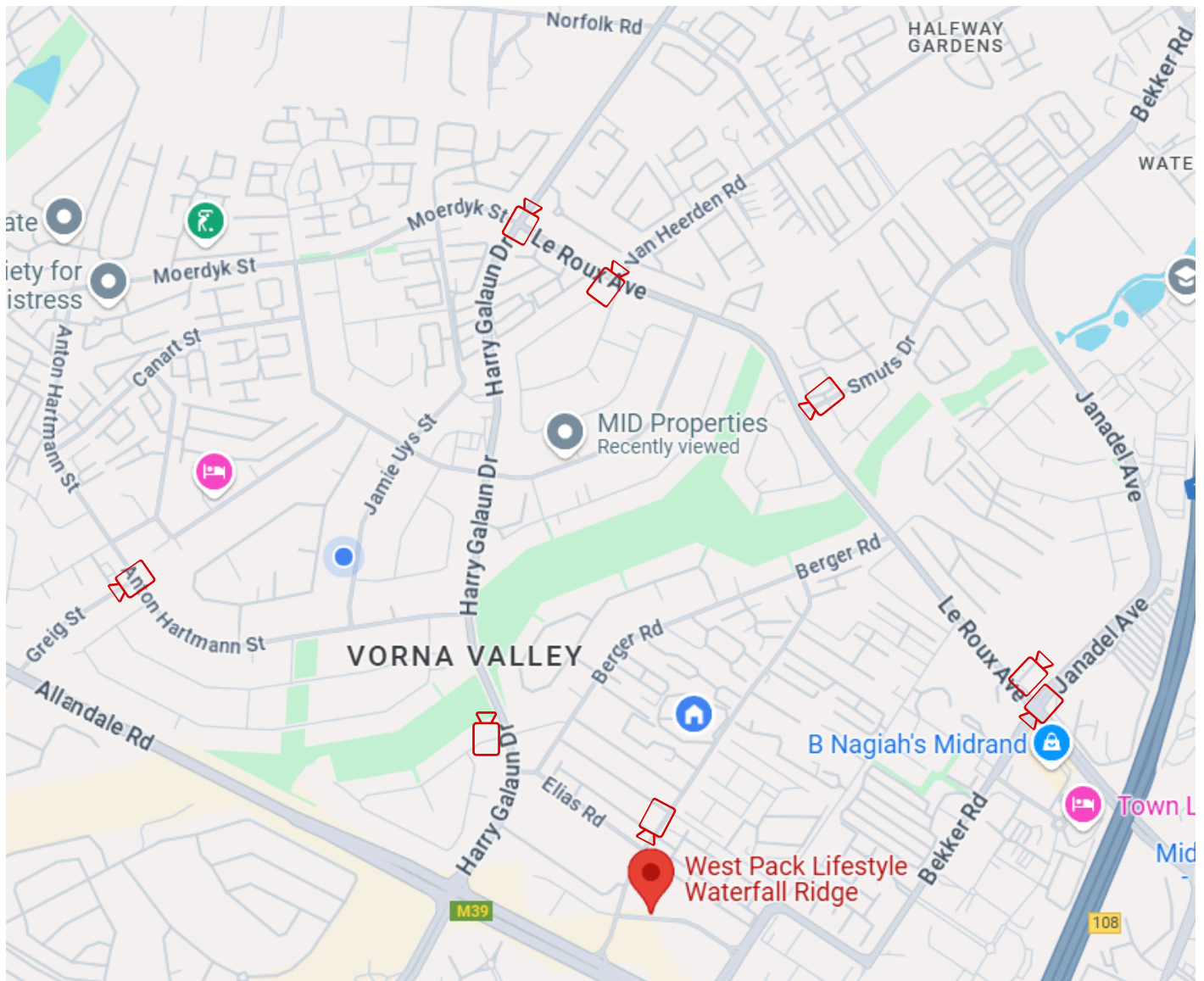
To those residents who have advertised with us and gifted the Vorna Valley Community their commitment to the LPR Cameras campaign! There's **5** more slots for local businesses to grab before we can make the campaign a reality! **Contact admin NOW!**



LPR Cameras

It's Official!
Here's where the
LPR Cameras
will be situated
in Vorna Valley!

Can you find the
8 cameras 
on the map below?



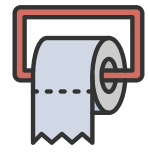


WHAT HAPPENS WHEN YOU MISFEED YOUR THRONE?

Flushing foreign objects doesn't just inconvenience you with blockages; it's an assault on the entire plumbing ecosystem. Pipes get clogged, sewerage backs up, and suddenly your pristine bathroom becomes a battleground.

On a larger scale, these non-flushables wreak havoc at wastewater treatment plants, costing time, money, and a lot of unpleasant labor to clean up. Spare a thought for the unsung heroes who deal with these blockages—they'd appreciate it.

Let's talk Potty!



To Flush or Not to Flush: A Comical Look at Your Toilet's Dietary Needs

Ah, the humble toilet—a porcelain marvel of modern engineering that serves us tirelessly, day in and day out. But let's talk about an awkward topic that often goes down the drain (literally): the things we flush that really, truly, **DON'T BELONG THERE.**

Wet Wipes:

Sure, they're labeled "flushable," but so is your dignity after a clog. These wipes are like that friend who says, "I'll help," but leaves you holding the bag (or, in this case, the plunger).



Diapers and Sanitary Pads:

These might seem innocent, but they're the No.1 culprit for blocking our sewerage systems!



Dental Floss:

It's stringy, tangly, and has no business joining the underground plumbing party. Floss is for teeth, not for pipes.



Food Scraps:

No, your toilet is not a second garbage disposal. But! If you eat it, it will come out just the way your toilet likes it!



Random Objects:

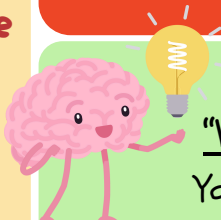
Toys, coins, and, yes, that rogue sock—these belong in your dustbin, not your toilet bowl.



THE GOLDEN RULE

"When in doubt, trash it out!"

Your pipes, your plumber, and your neighbourhood sewerage system will thank you!



THIS MONTH OF LOVE, SHOP LOCAL



**Shop
Opened
& Stocked**

Dog Food
From
R139 for 10KG
R339 for 25KG
R529 for 40KG

Cat Food
From
R89 for 2KG
R389 for 10KG

**Cans
Treats
Meds
& More**



**whatsapp for more
info or pricelist
076 391 5160**

**Paddys
Renovations**

Contact: Paddy
0823779723
Paddyselect@gmail.com

**Call us for:
Bathroom Makeovers
Built in cupboards
Tiling and Painting
Electrical Work**

KipMcGrath EDUCATIONCENTRES

We offer professional tutoring in:

- Maths / Maths Literacy
- English
- Afrikaans
- Physical Science
- Life Science
- Accounting

FREE ASSESSMENT VOUCHER

- English
- Maths
- Afrikaans

Gr R - 12

18 Albertyn Street, Vorna Valley, Midrand

kyalami@kipmcgrath.co.za

060 600 5685



UTILMATE
ultimate utility management

**UTILITY MANAGEMENT
FOR ALL COMMERCIAL
AND RESIDENTIAL COMPLEXES**

DESIGNED WITH THE
UTILITY CONSUMER IN MIND.

GET TO KNOW YOUR
ACCURATE CONSUMPTION
AND ALIGN YOUR
MUNICIPAL BILLING ACCORDINGLY!

TECHNOLOGY AND CUSTOMER EXPERIENCE
IS OUR FORTE.



KEVIN@UTILMATE.CO.ZA
072 710 9861



**WE NEED
YOUR HELP**

**Puppy Raisers
Wanted!**

Have you got Love, Care & Attention to spare?

**SA Guide Dogs
needs YOU!**

 Guidedog.org.za/pr-application

 alidap@guidedog.org.za





We specialise in quality products for great value!
MSDS reports are available for all our products on request.



WE SPECIALISE IN GREAT VALUE

Get all these products at great prices!
Delivered in your area!

- Toilet Paper
- Cleaning products
- Cookies/Rusks
- Raw nuts
- Oils
- Pet Food
- Safety Clothing
- and much more.....



082 905 1367
<https://taulogic.co.za>
Midrand, Edenvale and Randburg





DO YOU KNOW YOUR PROPERTY'S MARKET VALUE?

YOUR FREE REPORT IS HERE



WHATSAPP
"VALUATION + YOUR ADDRESS"
TO 072 710 9885

WWW.MIDPROPERTIES.CO.ZA

MODELLING ACADEMY

Build Self-Confidence & Self-Esteem

ETIQUETTE

Age Appropriate
Personal
Care

POISE

Anti-bullying Techniques

Embracing
Inner & Outer Beauty



Become the
best version
of YOU

Cultivating Healthy Habits
& Mindset

071 297 7296

midrand@figuresmodelssa.com

www.figuresmodelssa.com





The Courier Restaurant

@ The Swiss Country Club

Celebrate Valentines Day with us! Enjoy a romantic dinner with your loved one and indulge in our special Valentines Day Menu.

Choose 1 starter, Main and Dessert from the below Menu
@ R350 Per Person

STARTERS

- Deep fried Haloumi Sticks served with a side Salad and a Cilantro Chutney
- Calamari – grilled, served in a creamy lemon butter sauce.
- Springbok Carpaccio

MAINS

- Grilled Kingklip served with a creamy citrus sauce.
- 300g Sirloin Steak served with a brown onion gravy, crispy onion rings.
- Chicken Avocado served with creamy lemon butter sauce.
- Grilled Lamb Chops served with a brown onion gravy, crispy onion rings.

All the above served with Basil Pesto Vegetables and a choice of Creamy Mash Potatoes, Duchess Potatoes, Chips, or Spätzle

DESSERTS

Schaumschnitte
Crème Brûlée
Cheesecake

Bookings Essential – Call now to Reserve your Table

31 Moerdyk Street, Vorna Valley, Midrand | 011 805 3040

Follow us on Facebook [The Courier at Swiss](#)

ADVERTISING SPACE TO MARKET YOUR BUSINESS

**FULL PAGE
R750 PER MONTH**

**1/2 PAGE
R420 PER MONTH**

**1/4 PAGE
R250 PER MONTH**



THANK YOU FOR DRIVING SERVICE DELIVERY SEE IT? REPORT IT & TOGETHER WE'LL FIX IT!

CITY POWER ⚡⚡

These include :

- * Electricity outages
- * Meter issues
- * Street lights

* Prepaid/Smart metering.
Call: ☎0860 562 874 option 2
Call: ☎011 375 5555 option 2
Using web portal

<https://citypower.mobi>

or you can download the FREE app from playstore

"My Citypower"

Twitter: @CityPowerJhb

JOBURG WATER 💧💧

These include:

- * Sewage leaks and overflows
- * Burst water pipes
- * Replacing damaged meters
- * Fire Hydrants valves

Call: ☎0860 562 874

SMS line: ✉ 076 333 5052

Email: customer@jwater.co.za

Twitter: @JHBWater

JOBURG ROAD AGENCY 🚗

These include:

- * Pothole repairs
- * Storm water drains
- * Re-instatement
- * Road markings
- * Road signage
- * Traffic signals

* Pavements (Hard surface)

Call: ☎0800 002 587 or
0860 562 874 option 5

Email: hotline@jra.org.za

Twitter: @MyJra

CITY PARKS 🌳🌳

These include:

- * Tree pruning/cutting
- * Grass cutting
- * Municipal pools
- * The Joburg Zoo
- * Libraries
- * Recreation centres
- * Joburg open spaces
- * City owned Parks

Call: 0860 562 874 option 0

Email:

vmkhize@jhbcityparks.com

pkubheka@jhbcityparks.com

wafrika@jhbcityparks.com

Fallen trees : ☎011 712-6600

Or trees@jhbcityparks.com

Pikitung 🗑️♻️

These include :

- * Refuse removal (Household)
- * Clearing public bins
- * Illegal dumping

Call: ☎0860 562 874 option 4

Illegal dumping WhatsApp to 082 779 1361

Emergency

SERVICES / JMPD 🚓🚑🚒

These include :

- * Fires
- * Noise control
- * Ambulances services
- * By law infringements
- * Traffic enforcement and licensing

Call JMPD 011 758 9620 or 011 375 5918 and state emergency

Call Fire: ☎(011) 375-5911

BILLING QUERIES 📄💰

These include :

- * Billing related matters
- * Statement inquiries
- * Payment arrangements

Call: ☎0860 562 874 option 1

Email: regionRevenue@joburg.org.za

Municipal statement www.joburg.org.za

Under e-services, other queries must be logged at a walk-in centre

HEALTH-RELATED ISSUES 🏥🇿🇦

These include :

- * Health department
- * Environmental health

Call: ☎011 375 5555 and ask for

Environmental Health

Contact the Regional Office on ☎011 681-8082 or

visit them at their offices, 2nd Floor at Eureka

House, 92 Marlborough Road, Springfield

HIJACKED PROPERTIES 🏠🚧

These include :

- * Hijacked property
- * Abandoned properties

Contact the Group Forensics and Investigation Services (GFIS) on ☎ 080 000 2587

BUILDING CONTROL 🏗️

These include :

- * Town planning
- * Building inspector
- * Plans
- * Urban management
- * Zoning

Email: ComplaintsPLE@joburg.org.za

Please save this page and keep it handy for up to date reporting